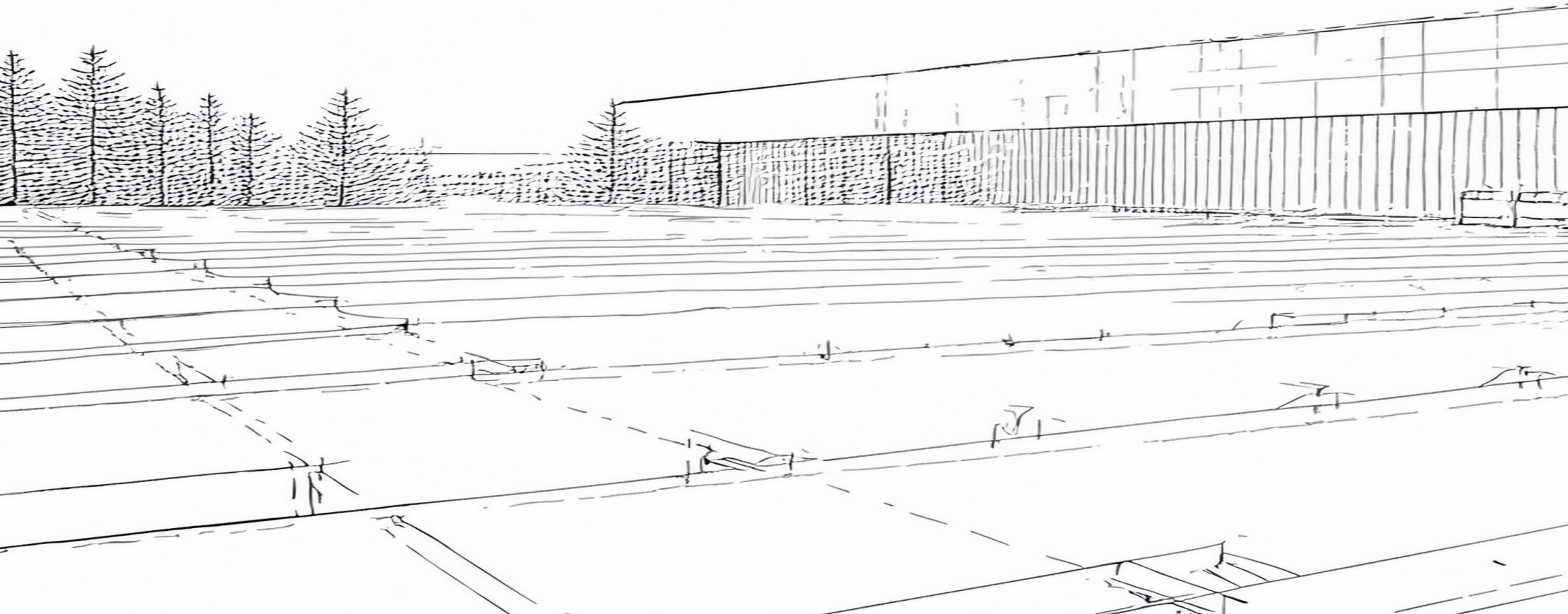


COMMERCIAL ROOFING PORTFOLIO

S&S ROOFING AND CONSTRUCTION, INC.
336 GA HWY-32 EAST, LEESBURG GA - 31763



SUMMARY

3 - ABOUT US

4- HOW WE ASSIST OUR CUSTOMERS

5- ROOFING TYPES

6- BIG LOTS

8-PLANET FITNESS

10- ATKORE

12- COFFEE REGIONAL MEDICAL CENTER

14- SYNERGY PEANUT

16- BROOKS FURNITURE

18- BROOKS PLAZA

20- FIRST BAPTIST CHURCH OF TIFTON

22- BG WETHERINGTON FARM

24- FURNITURE EXPRESS

26- BEDS FOR LESS

28- COVENANT PRESBYTERIAN CHURCH

30- TRINITY BAPTIST CHURCH

32- IRON MULE

34- HUNTER'S CHASE

36- CONTACT US

ABOUT US

As a national general contractor, we specialize in disaster recovery for industrial, retail, religious, and multi-family properties. With operations and licenses spanning across the United States, we serve a diverse range of clients, from major management firms to individual and corporate property owners.

Our mission is to turn catastrophic events into comeback stories. With a commitment to top-tier quality and rapid response, we ensure your restoration journey is smooth, efficient, and successful. When disaster strikes, S&S Roofing and Construction is your trusted partner in rebuilding stronger than ever.

336 GA HWY 32 EAST, LEESBURG GA - 31763

CORPORATE OFFICE: 229.439.9995 | TOLL FREE: 855.757.8676

SANDSROOFINGPROS.COM

HOW WE ASSIST OUR CUSTOMERS

COMMERCIAL ROOFING FOR EVERY BUILDING TYPE

S&S Roofing and Construction installs and maintains flat roofs, low-slope roofs, and steep-slope systems for all types of commercial properties. Whether it's an office building, warehouse, retail center, or industrial facility, we provide tailored roofing solutions designed for durability, energy efficiency, and long-term performance.

INSURANCE LOSS RESTORATION

Storm damage can be overwhelming, but we make the recovery process easier. Our team works directly with property owners and insurance providers to assess damage, document claims, and ensure a smooth restoration process. We handle everything from temporary protection to full roof replacement, bringing your property back to pre-storm condition with minimal hassle.

EMERGENCY STORM DAMAGE REPAIRS

When disaster strikes, quick action is critical. We provide 24/7 emergency roofing services to secure damaged structures, prevent further water intrusion, and restore functionality. From temporary tarping to full-scale repairs, our team responds fast to get your business back up and running.

ROOFING TYPES

Metal Roofing Systems
Thermoplastic Polyolefin (TPO)
Ethylene Propylene Diene Monomer (EPDM)
Built-Up Roof (BUR)/Modified Bitumen
Asphalt Shingles
Clay Tile
Slate
Composite Slate
Wood Shakes

ACCREDITATIONS



1 | HARBOR FREIGHT

2525 Dawson Rd - Albany, GA





DESCRIPTION

This project at Harbor Freight in Albany, GA involved a complete roof replacement of the retail facility. We removed the existing roofing system and installed approximately 540 squares of GAF 60 mil TPO membrane.

The new TPO system offers improved energy efficiency, enhanced weather protection, and long-term reliability. The project was completed with minimal disruption to store operations and provides a durable, low-maintenance solution tailored for commercial use.

2 | PLANET FITNESS

1016 N Westover Blvd - Albany, GA



ROOFING TYPE

60 Mil TPO Roofing Membrane

PROJECT SIZE

19,000 ft²



DESCRIPTION

This project at Planet Fitness in Albany, GA involved a full roof replacement of the commercial gym facility. We removed the existing roofing system and installed approximately 180 squares of GAF 60 mil TPO membrane.

The new TPO system delivers reliable weather protection, improved energy efficiency, and low-maintenance performance — ideal for high-traffic commercial buildings like fitness centers. The project was completed efficiently with no disruption to business operations.

3 | ATKORE

1206 Sunset Drive - Thomasville, GA



ROOFING TYPE

60 Mil TPO Roofing Membrane

PROJECT SIZE

19,000 ft²



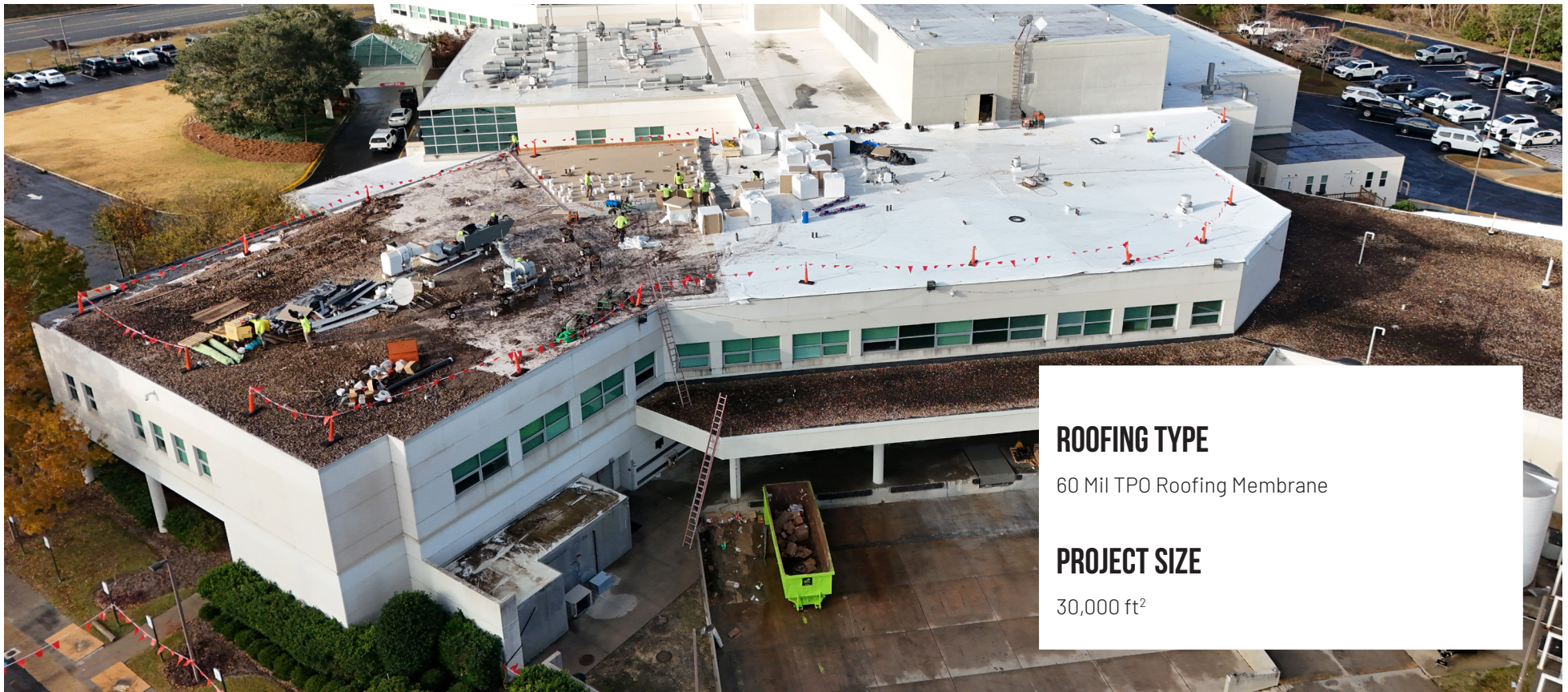
DESCRIPTION

For this commercial roofing project at Atkore International in Thomasville, GA, we installed a 190-square roofing system designed for durability and energy efficiency. The project included the installation of 2" Polyiso insulation, providing excellent thermal resistance and reducing energy costs for the facility.

To complete the system, we installed .60 mil TPO roofing membrane, a highly durable, single-ply material known for its weather resistance, UV protection, and longevity. The TPO was fully adhered to ensure a seamless, watertight finish, protecting the building from leaks and harsh environmental conditions.

4 | COFFEE REGIONAL MEDICAL CENTER

1101 Ocilla Rd - Douglas, GA



ROOFING TYPE

60 Mil TPO Roofing Membrane

PROJECT SIZE

30,000 ft²



DESCRIPTION

For this project at Coffee Regional Medical Center in Douglas, GA, we installed 300 squares of .60 mil TPO roofing membrane, providing a durable and energy-efficient solution for the facility.

To enhance insulation and thermal performance, we installed 2" Polyiso insulation, which helps regulate indoor temperatures and improve overall energy efficiency. The TPO membrane was fully adhered to ensure a seamless, watertight barrier, offering superior protection against weather, UV exposure, and potential leaks.

5 | SYNERGY PEANUT

555 Rockhouse Rd Ashburn, GA



ROOFING TYPE
26 Gauge Metal R Panel

PROJECT SIZE
34,000 ft²



DESCRIPTION

This project at Synergy Peanut in Tifton, GA involved a full replacement of the facility's metal roofing system following hail damage. We removed the existing panels and installed approximately 340 squares of new 26-gauge metal roofing.

The new system restored full protection to the property, providing improved durability, weather resistance, and long-term performance against future storm events.

6 | BROOKS FURNITURE

1201 W. Broad Ave - Albany, GA



ROOFING TYPE

60 Mil TPO Roofing Membrane

PROJECT SIZE

61,200 ft²



DESCRIPTION

At Brooks Furniture in Albany, GA, we completed a full roof replacement, covering 612 squares with a new 60 mil TPO roofing system. The existing roof was removed and replaced with a fully adhered TPO membrane, chosen for its excellent durability, energy efficiency, and low-maintenance performance.

This installation provides the facility with a seamless, watertight barrier designed to withstand the elements and protect the building long-term. The new roofing system ensures improved weather resistance and thermal performance across the entire roof area.

7 | BROOKS PLAZA

1135 W. Broad Ave - Albany, GA



ROOFING TYPE

60 Mil TPO Roofing Membrane

PROJECT SIZE

232,000 ft²



DESCRIPTION

This project at Brooks Plaza in Albany, GA involved a complete re-roof of the commercial retail center. We installed 2,320 squares of .60 mil TPO roofing membrane, replacing the existing system with a more modern, energy-efficient solution.

The fully adhered TPO membrane was selected for its clean appearance, reliable weatherproofing, and long-term performance. With this upgrade, Brooks Plaza benefits from improved protection, reduced maintenance needs, and enhanced energy efficiency, making it a solid investment for the property's longevity.

8 | FIRST BAPTIST CHURCH OF TIFTON

404 Love Ave - Tifton, GA



ROOFING TYPE

Architectural Shingles

PROJECT SIZE

45,000 ft²



DESCRIPTION

This project at First Baptist Church in Tifton, GA involved a complete re-roof of the main church building. We removed the existing roofing system and installed 450 squares of architectural shingles, restoring the roof with a durable and updated replacement.

The project was completed with a focus on maintaining the building's appearance and ensuring long-term protection against the elements. First Baptist Church now has a new roofing system built for reliability and consistent performance.

9 | BG WETHERINGTON FARM

1101 W Savannah Ave - Valdosta, GA



ROOFING TYPE

26 Gauge R Panel

PROJECT SIZE

110,000ft²



DESCRIPTION

This project at BG Wetherington Farms in South Georgia involved a complete re-roof of the main facility after it sustained severe damage from Hurricane Helene. We removed the compromised roofing system and installed approximately 1,100 squares of 26-gauge metal panels, restoring the structure with a durable and weather-resistant solution.

The project was completed with a focus on structural integrity and long-term protection. With the new metal roofing system in place, BG Wetherington Farms is better equipped to withstand future storms while maintaining a clean, functional appearance.

10 | FURNITURE EXPRESS

808 N Patterson St - Valdosta, GA



ROOFING TYPE

60 Mil GAF TPO Roofing System

PROJECT SIZE

24,300 ft²



DESCRIPTION

This project at Furniture Express in Valdosta, GA involved the removal of the existing torched-down roofing system and installation of a new single-ply membrane. We replaced the roof with approximately 243 squares of GAF 60 mil TPO, providing a modern, energy-efficient solution.

The new fully adhered TPO system offers improved durability, weather resistance, and long-term performance. This upgrade ensures reliable protection for the building and helps reduce maintenance needs moving forward.

11 BEDS FOR LESS

1117 North Ashley Street - Valdosta, GA



ROOFING TYPE

60 Mil TPO Roofing System

PROJECT SIZE

85,000 ft²



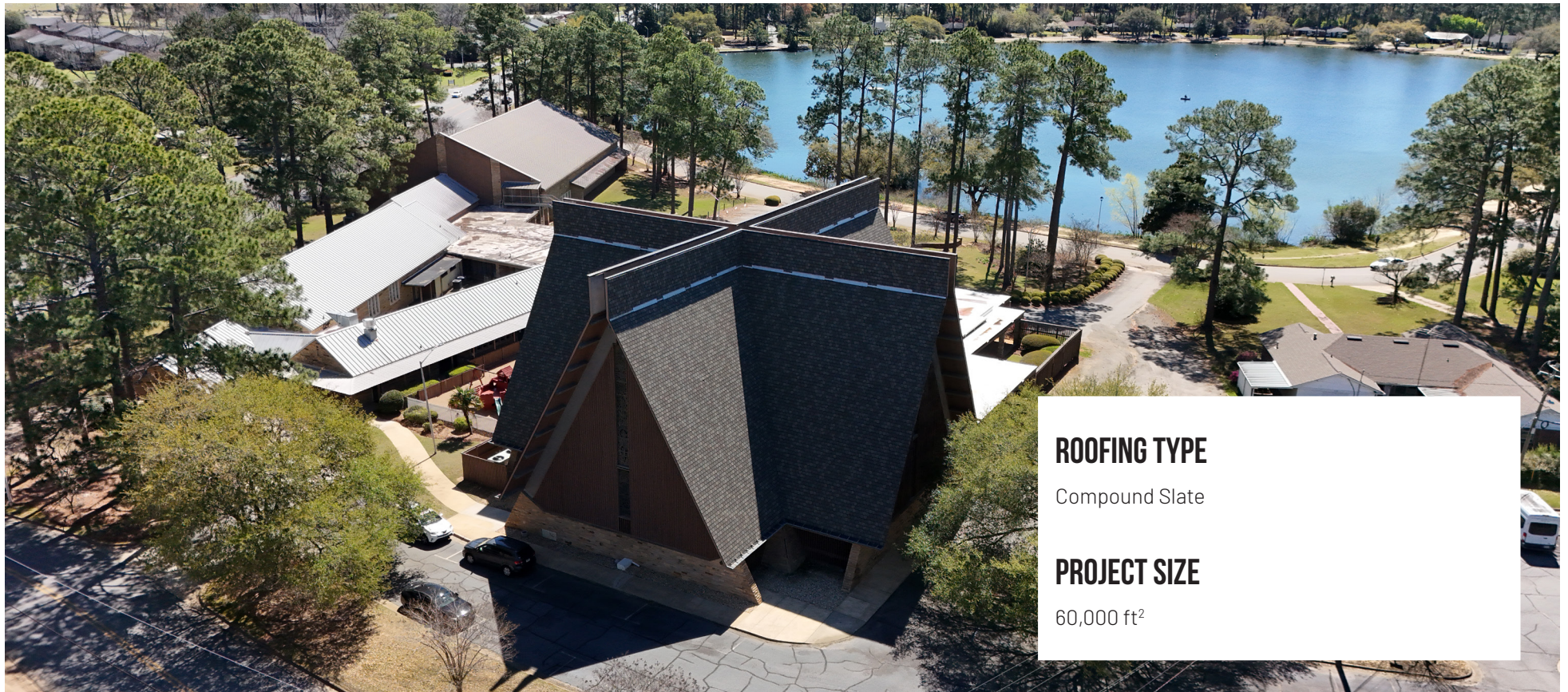
DESCRIPTION

This project at Beds for Less in Valdosta, GA consisted of a full commercial roof replacement. Our team removed the aging torched-down roofing system and installed approximately 85 squares of GAF 60 mil TPO membrane to modernize and protect the building.

The new TPO system delivers clean aesthetics, enhanced energy efficiency, and dependable performance in harsh weather. With this upgrade, Beds for Less now has a low-maintenance, long-lasting roofing solution tailored for commercial use.

12 | COVENANT PRESBYTERIAN CHURCH

2126 E. Edgewater Drive - Albany, GA



ROOFING TYPE

Compound Slate

PROJECT SIZE

60,000 ft²



DESCRIPTION

This project at Covenant Presbyterian Church in Albany, GA involved a full roof replacement following wind damage sustained during a storm in 2019. We removed the existing roofing system and installed approximately 600 squares of architectural shingles to restore the building's integrity.

The new shingle roof provided a clean, upgraded look while improving the structure's ability to withstand future weather events. The project was completed with care to preserve the character of the property and ensure long-term reliability.

13 | TRINTY BAPTIST CHURCH

201 12th Ave SE Moultrie, GA 31768



ROOFING TYPE

Architectural Shingles

PROJECT SIZE

35,000 ft²



DESCRIPTION

This project at Trinity Baptist Church in Moultrie, GA involved a complete replacement of the existing slateroofing system. Our team removed the old roof and installed a new composite slate roofing system, bringing the building up to current standards with improved protection and appearance.

The project was completed efficiently and with attention to detail, ensuring the church received a reliable, long-lasting roofing solution that maintains the integrity of the structure.

14 | IRON MULE

491 Farm Road 2182 - Cassville, MO



ROOFING TYPE

26 Gauge R Panel

PROJECT SIZE

120,000 ft²



DESCRIPTION

This project at Iron Mule in Cassville, MO involved a full replacement of the metal roofing system after the building sustained significant hail damage. We removed the damaged roof and installed approximately 1,200 squares of 26-gauge R-panel metal, restoring full protection to the facility.

The new metal system offers increased durability and resistance to future storm events, while maintaining the functional, low-maintenance performance required for this type of commercial property.

15 | HUNTER'S CHASE

1 Hunter's Chase Circle - Thomasville, GA



ROOFING TYPE

Architectural Shingles

PROJECT SIZE

104,500 ft²



DESCRIPTION

This project at Hunter's Chase Apartments in Thomasville, GA involved a full re-roof of all 16 buildings on the property following wind damage caused by Hurricane Helene. Our team removed the storm-damaged roofing systems and installed approximately 1,045 squares of architectural shingles across the complex.

The project was completed in just 14 days, with crews working efficiently to minimize disruption to residents. Each building received a durable, long-lasting roofing system, restoring full protection and maintaining a clean, consistent appearance throughout the community.

LET'S GET STARTED

With a presence across the entire U.S., S&S Roofing & Construction is proud to be the trusted choice for commercial roofing solutions nationwide. Our team is committed to excellence, from the first inspection to the final shingle.

We're excited for the opportunity to work with you and bring the same dedication, transparency, and quality that have earned us the confidence of clients across the country.



855-757-8676



CONTACT@SANDSROOFINGUSA.COM



EXPLORE OUR ONLINE CHANNELS

